

CAASPP Parent Info

With Ms. Meza and Mrs. Melendez



What we'll be discussing today:

- ❖ What is CAASPP?
- ❖ How will CAASPP test scores be used?
- ❖ What do these scores mean?
- ❖ How can I help my child prepare for the CAASPP test?



CAASPP SYSTEM

Science

California Science Test

California Alternate
Assessment

English Language Arts/ Literacy (ELA) and Mathematics

Smarter Balanced Assessments
California Alternate Assessments

Spanish Reading/ Language Arts

California Spanish
Assessment



**California Assessment of Student
Performance and Progress (CAASPP)**

Additional Resources

Interim assessments
Formative assessment process (Tools for Teachers)
Grade two diagnostic assessments (ELA/mathematics)



July 2020

What is CAASPP?

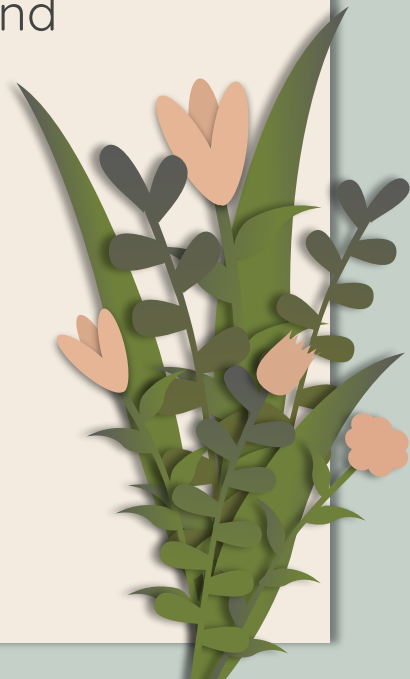
The SBAC and who takes it...

The Smarter Balanced Summative Assessments are an annual measure of what students know and can do using the Common Core State Standards for English language arts/literacy (ELA) and Mathematics.

All students in grades 3–8 and grade 11 take the SBAC.

Why the SBAC is given...

The purpose of the SBAC is to assess student knowledge and skills in ELA and mathematics, as well as how much students have improved since the previous year.



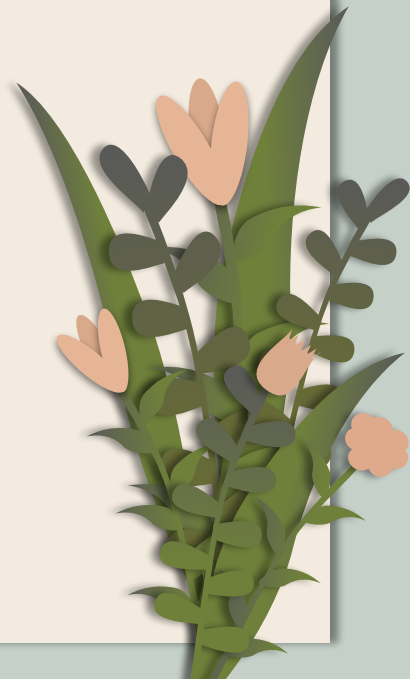
What are students tested on?

ELA Domains

- CAT
 - Reading
 - Listening
 - Research and Inquiry
- Performance Task (10 points total)
 - Evidence and Elaboration (4 pts)
 - Organization and Purpose (4 pts)
 - Conventions (2 pts)

Math Claims

- Concepts and Procedures
- Problem Solving and Modeling & Data Analysis
- Communicating Reasoning



The CAST

The California Science Test

- Domains
 - Life Science
 - Physical Science
 - Earth and Space Sciences
- NOT adaptive
- Only for 8th graders at this time
- Completed through student's Science class



How will Kolb use these scores?

- **Student Class Placements**
 - Support classes
 - Honors classes
 - Math I
- **School-wide goal setting**
- **Data-driven Instruction**
- **Recognize student achievement**



There are two parts for each SBAC...

The Performance Task

ELA

- Multi-paragraph essay based on a prompt and 3-4 sources.

Math

- Solve 3-4 questions based on a real-world math situation

The CAT (computer adaptive test)

The Smarter Balanced Assessments are computer-adaptive tests that adjust the difficulty of questions on the basis of the answers students give. As students answer correctly, they receive more challenging questions. Incorrect answers trigger easier questions.



ELA Score Bands



Grade	Min Scale Score	Max Scale Score	Achievement Level Scale Score Range for Standard Not Met	Achievement Level Scale Score Range for Standard Nearly Met	Achievement Level Scale Score Range for Standard Met	Achievement Level Scale Score Range for Standard Exceeded
6	2230	2770	2230–2456	2457–2530	2531–2617	2618–2770
7	2260	2810	2260–2478	2479–2551	2552–2648	2649–2810
8	2290	2850	2290–2486	2487–2566	2567–2667	2668–2850

Math Score Bands



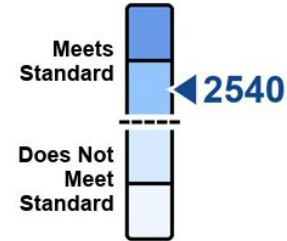
Grade	Min Scale Score	Max Scale Score	Achievement Level Scale Score Range for Standard Not Met	Achievement Level Scale Score Range for Standard Nearly Met	Achievement Level Scale Score Range for Standard Met	Achievement Level Scale Score Range for Standard Exceeded
6	2230	2770	2230–2456	2457–2530	2531–2617	2618–2770
7	2260	2810	2260–2478	2479–2551	2552–2648	2649–2810
8	2290	2850	2290–2486	2487–2566	2567–2667	2668–2850

Smarter Balanced for English Language Arts/Literacy

Jenny's Overall ELA Score

Jenny's score of 2540 met the grade five standard.

**Level
3**
Standard Met

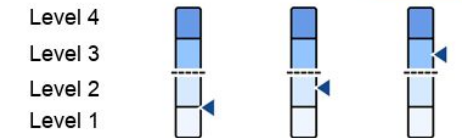


The score range for grade five is 2200–2730. A score of 2502 or higher meets the grade five standard.

Jenny's Score History

Jenny's score increased from last year, enough to reach a higher level.

Grade	Grade 3	Grade 4	Grade 5
Score	2366	2450	2540
Level	Level 1	Level 2	Level 3



The arrow represents how far Jenny's score is from reaching the next level. Standards for the next grade are higher than for the previous grade. As a result, students may need a higher score to stay in the same level as the previous year.

Jenny's Performance Areas



Reading and Listening

How well did Jenny understand written and spoken information?

Near Standard



Writing and Research

How well did Jenny use research skills and communicate in writing?

Near Standard

ELA Scores



Performance Task Scores



California Assessment of
Student Performance and Progress

Grade 5

Jenny's Essay Performance

Jenny was assigned a narrative essay as part of the test. Jenny's essay is scored in three categories and provides additional information about Jenny's writing.

Organization/Purpose

Did the writing tell a complete story with a setting, character(s), and a clear sequence of events?



2 out of 4

Development/Elaboration

Were the experiences, characters, setting, and events clearly developed in the story? Did the writing make use of effective vocabulary, figurative language, and style?



2 out of 4

Conventions

Did the writing include correct sentence formation, punctuation, spelling, capitalization, and grammar?



2 out of 2



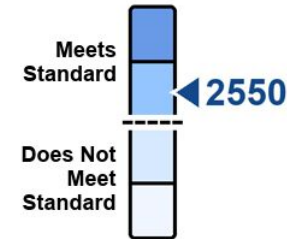


Smarter Balanced for Mathematics

Jenny's Overall Mathematics Score

Jenny's score of 2550 met the grade five standard.

Level
3
Standard Met

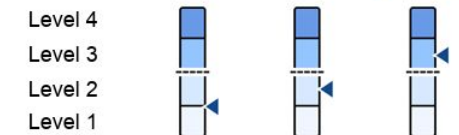


The score range for grade five is 2220–2740. A score of 2528 or higher meets the grade five standard.

Jenny's Score History

Jenny's score increased from last year, enough to reach a higher level.

Grade	Grade 3	Grade 4	Grade 5
Score	2380	2450	2550
Level	Level 1	Level 2	Level 3



The arrow represents how far Jenny's score is from reaching the next level. Standards for the next grade are higher than for the previous grade. As a result, students may need a higher score to stay in the same level as the previous year.

Jenny's Performance Areas



Concepts and Procedures

How well did Jenny apply mathematical concepts and procedures to solve problems?

Near Standard



Mathematical Practices

How well did Jenny apply strategies to solve complex problems and explain the reasoning for the solution?

Near Standard

Math Scores

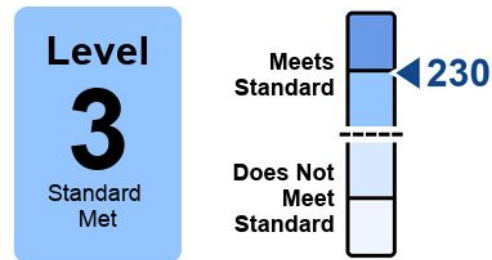




California Science Test

Jenny's Overall Science Score

Jenny's score of 230 met the grade five standard.



The score range for grade five is 150–250. A score of 214 or higher meets the grade five standard.

How Jenny's Score Compares

Your Child's Score	School Average	State Average
230	228	225

Jenny's Performance Areas



Earth and Space Sciences

How much did your child learn about Earth's place in the universe, Earth's systems, and Earth and human activity?

Near Standard



Life Sciences

How much did your child learn about living things, ecosystems, heredity, and biological evolution?

Near Standard



Physical Sciences

How much did your child learn about matter and its interactions, motion and stability, energy, and waves and their applications?

Near Standard





Resources for Parents

Testing Dates

CAST

The week of
April 21st-25th
with science
classes

ELA PT

Wednesday,
April 30th

Minimum Day!

ELA CAT

Thursday, May
1st

Minimum Day!

Math CAT

Wednesday, May
7th

Minimum Day!

Math PT

Thursday, May
8th

Minimum Day!

Our Goal

20 points of Growth for each student

We always want our students to be at standard, but this is not an equitable goal for everyone. So, we're just looking for everyone to show at least 20 points of growth.



Q&A

Do you have any questions?

If you have questions later you can contact us by
email:

Ms. Meza: rmeza@rialtousd.org

Mrs. Melendez: jmelende@rialtousd.org

